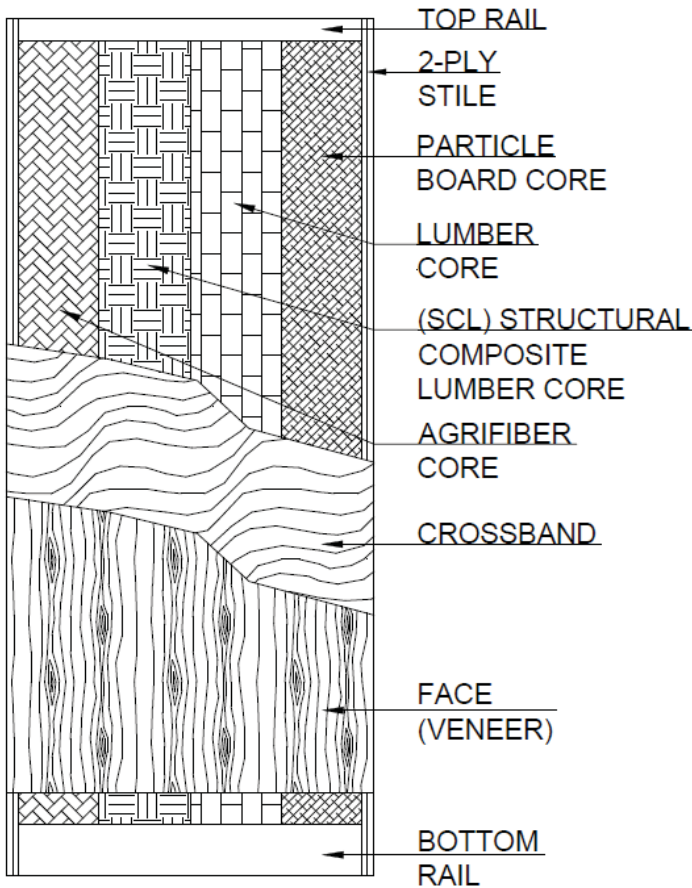


**ARCHITECTURAL SOLID CORE
WIC CERTIFIED AWS/WDMA CUSTOM & PREMIUM GRADE DOORS
NON-RATED & 20 MINUTE FIRE RATED DOORS,
TYPE 2, 5-PLY**



TOP RAIL: Standard "2-1/2" thick, using solid soft wood bonded to core. Optional Hardwood available upon request

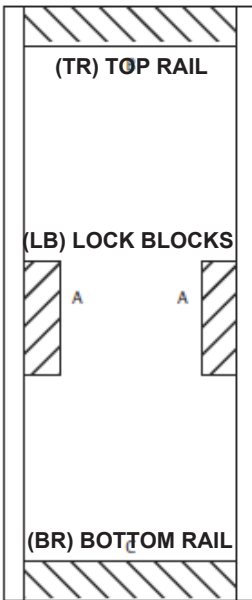
VERTICAL STILES: Standard 1-3/8" thick using 2-ply solid hardwood bonded to core

CORE: Urea Formaldehyde-Free or FSC certified U.F.F Low-density (PC-5) Particle Board, (LC-5) Lumber (2-1/2" wide staggered blocks), (SCL-5) Structural Composite Lumber or Timberstrand & (AG-5) Agrifiber cores that meet or exceeds Grade LD-1 or LD-2

FACE: Domestic and Exotic wood veneer, Plastic Laminate, Medium Density Overlay, Hardboard & HDF available

BOTTOM RAIL: Standard 2-1/2" thick using solid softwood bonded to core. Optional Hardwood available upon request

DOOR STANDARDS & FEATURES



Blocking Reinforcement Options:

Available at additional cost for undercutting and specialized hardware. Blocking recommended for Extra Heavy Duty Doors using surface mounted hardware. Fire Composite Blocking may be required by certain hardware. (TR) TOP RAIL, (BR) BOTTOM RAIL, (LB) LOCK BLOCKS.

Leed Credits Supported:

- MR 4.1 Recycled content-10%
- MR 4.2 Recycled content-20%
- MR 5.1 Regional materials-10% within 500 miles
- MR 5.2 Regional materials-20% within 500 miles
- EQ 4.1 Low-emitting material-adhesives and sealants.
- EQ 4.2 Low-emitting material-paints and coatings
- EQ 4.4 No added urea formaldehyde.

Maximum Size	5/0 x 10/0 singles, 8/0 x 9/0 pairs
Available Thickness	1-3/8", 1-3/4" & 2-1/4"
Stiles	Not less than 1-3/8" thick (before trimming). 2-ply stile, minimum density 27 pcf. The outer face stile shall be full length matching edgeband in solid hardwood. The inner back stile shall be full length solid hardwood, bonded to core.
Cutouts	Allow 5" minimum distance from door edges and hardware cutouts, not to exceed 40 percent of door face.
Standard Bevel	1/8" in 2", Square Hinge stile, Beveled Lock stile unless noted otherwise.
Glue	Type 1
Veneer Match	Book & center match standard, Slip or Random available upon request.
Warranty	Lifetime interior warranty, No Warranty available for exterior applications.
Finish	100% U.V. solids available
Packaging	Bulk wrapped, standard or special crating available

DOOR STANDARDS:

Neutral Pressure; 20-minute ITS/Warnock-Hersey or U.L. fire labels shall be available within size and usage limitations. Fire-rated doors must use approved lite frames. Louvers are prohibited in 20 minute fire doors. Neutral Pressure must be noted at time of bid. **Positive Pressure;** fire label available on 20-minute single doors going into welded or knockdown steel frames. Surface-applied smoke gasketing, such as Pemko S88, must be applied to achieve "S" rating (gasketing to be supplied by others). Listed and labeled steel light frames must be used for light openings. Positive pressure must be noted at time of bid. **Hardware Preparation;** All cutouts for mortise hardware shall be made at the factory from hardware manufacturer's templates and approved shop drawings. **Dimensional Tolerances;** Doors shall be of sizes noted on the schedule and drawings, +/- 1/16" in thickness & height, +/- 1/16" in width (non-prefit) +/- 1/32" (factory prefit), Hardware machining; Hinge Mortises - location +/- 1/32", height + 1/32"-0", depth +.025-0", backset +0" to -1/32", Lock Fronts - location +/- 1/32", height +1/32"-0", width +1/32"-0", depth +.025-0".